



centerlinealfa.com
888.750-ALFA ^[2532]

CATALOG

SUMMER 2013

NO. 19

Welcome to the latest edition of our Alfa Romeo parts and accessories catalog. Here you'll find a brief overview of the type of parts we carry for nearly every Alfa model from the last 50 years. To view parts for your Alfa - please stop by our web site at www.centerlinealfa.com.

We hope the compact size of this catalog means you'll tuck it into your glove box or tool chest - where the new sections of technical reference material will be ready at a moment's notice.

About Centerline Products

If you own an Alfa Romeo - from the earliest 750-series Giulietta to the last 164 imported to the USA - you've realized that these cars are true pieces of rolling artwork that embody all of the passion and advanced engineering Italy is famous for.

Centerline Products is not your typical parts supplier. We strive to deliver products and customer service worthy of these legendary *automobili*.

As a small, independent specialist that is exclusively dedicated to Alfa Romeo, we have been supplying quality parts and accessories for over 30 years. We drive our own Alfas often and hard - both on the street and at the track - and have owned examples of nearly every production Alfa. This depth of experience allows us to stock the best parts and develop our own line of exclusive performance and restoration parts.



Many of our performance and restoration parts are available exclusively at Centerline



We stock high performance wheels and suspension parts for many different Alfas

Table of Contents

Accessories and Apparel.....	05
Engine Parts.....	07
Fuel System	10
Filters (Oil, Air, Fuel)	12
Ignition System.....	13
Cooling System.....	14
Clutch and Gearbox.....	15
Driveshaft and Axle	16
Suspension	17
Suspension (Illustrations).....	19
Braking System.....	20
Electrical System.....	22
Bodywork.....	23
Interior Parts.....	26
Exhaust	29
Books and Manuals.....	31
Technical Information and Charts	32
Ordering Information	39



Photo © Peter Wells

About CenterlineAlfa.com

This catalog is intended to be a brief overview of the parts we stock. To see our full selection please spend some time on our web site at www.centerlinealfa.com. There you will find current pricing and stock levels, as well as many newly released parts - in addition to sections of helpful technical content and photo galleries.

Below is an outline of several ways you can use the web site to find parts quickly.

Sort Parts by Chassis and Category

By choosing a chassis/model from the menu, you will be able to look at all the parts that fit your car. You can further refine your search by choosing a category and sub-category.

For example, if you are looking for a brake booster for a 1967 Duetto, you would choose:

105 Series > Braking System > Boosters

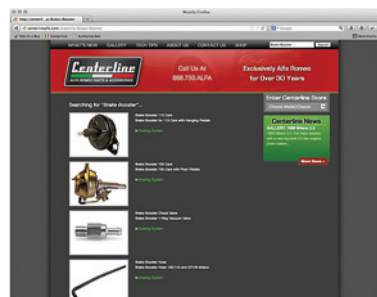
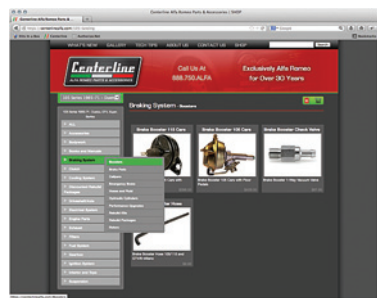
Search by Keyword or Part Number

There is a search window in the upper right corner of every page on the web site. At any time, you can enter a keyword, Centerline part number, or Alfa part number in that window to be taken directly to a part.

Again, to find the brake booster for a 1967 Duetto you could search under:

"Brake Booster" - Keyword
"BB416" - Centerline Part Number
"607.12082" - Alfa Romeo Part Number

Not all of our parts have Alfa part numbers associated with them, and all Alfa numbers have been superseded many times, so searching under Alfa numbers may not return results. Alfa part numbers are for reference only and their use does not mean that parts are original equipment.



**Scan QR Code
with your smart
phone to go to
our web site.**



Alfa Romeo Centenario T-Shirt

Official 100th Anniversary Shirt. *Runs small.*

Part No. **AC307** - \$34.⁹⁵



Step Nose GTV T-Shirt

Beautiful GTV art, burgundy w/ grey printing.

Part No. **AC309** - \$28.⁹⁵



Vintage Driving Goggles

Just like Tazio Nuvolari wore - by OMP of Italy.

Part No. **AC325** - \$89.⁹⁵



Autodromo Veloce Watches

1750 GTV tach face, high quality movement.

Part No. **AC312** - \$425.⁰⁰



Autodromo Veloce
watch - Silver Bezel



Alfa Logo Sports Bottles

Lightweight aluminum, PBA-free bottles.

Part No. **AC327** - \$19.⁹⁵



Tire Tread Baseball Cap

Genuine Alfa accessory, cotton twill, one size.

Part No. **AC324** - \$39.⁹⁵



Logo Decals and Patches

Decal, magnets, and patches. Various sizes.

Starting at **\$3.⁹⁵**



Distinctive Alfa Keychains

8 styles to choose from in leather or enamel.

Starting at **\$9.⁹⁵**



Giulia Spider Poster

Stylized 101 Giulia Spider with Italian themes.

Part No. **POSTGTTA** - \$29.⁹⁵



GTA @ Nurburgring Poster

Famous image of racing GTA at full tilt.

Part No. **POSTGTA2** - \$29.⁹⁵



High Lift 4-Cylinder Camshafts

A Centerline Exclusive - 11.1 mm or 10.5 mm lift.

Part No. **PC452 or PC455** - \$198.⁰⁰



Oversized and Standard Valves

High quality valves, made in Italy and the USA.

Starting at **\$8.⁴⁵**



High Performance Valve Springs

Stiffer springs to prevent high RPM valve float.

Starting at **\$71.⁵⁰**



Valve Guides, Seals, Tappets

The finest modern materials for long life.

Starting at **\$4.⁸⁵**



Piston and Liner Sets

High quality piston and liner sets made to original specifications in Europe.

We stock 1300, 1600, and 1750 sets in standard compression ratio. For the 2000 engines we recommend the 10.0:1 compression ratio "Motronic" pistons which give a useful boost in power and torque. For the 3.0 Liter V/6 we sell the proven, higher compression 164 "S" piston and liner set.

Starting at **\$649.⁰⁰**



Engine Bearing Sets

Main bearings, rod bearings, and thrust washers.

Starting at **\$19.95**



Hastings Piston Ring Sets

For improved performance and durability.

Starting at **\$81.50**



1400cc Overbore Kit

Increased power and torque on your 1300.

Part No. **PL140** - **\$649.95**



Veloce Conversion Mounts

Convert your 1300 "Normale" to Veloce specs.

Part No. **EM501** or **EM503** - **\$198.00**



Timing Belts and Chains

OEM quality belts, chains, and tensioners.

Starting at **\$25.95**



Original Oil Pumps

4 cylinder, GTV/6-Milano, and 164 pumps.

Starting at **\$349.00**



1750/2000 Conversion Mounts

Install a 1750 or 2000 engine in a 750/101 car.

Part No. **EM502** - **\$198.00**



Gaskets and Gasket Sets

Individual gaskets, head sets, or rebuild sets.

Starting at **\$94.50**



Engine Mounts

For all 4-cylinder and V/6 engines.

Starting at **\$27.50**



Oil Pans and Guards

Heavy-duty replacements. 4-cylinder only.

Part No. **OP610** - **\$112.50** Part No. **OP616** - **\$298.00**



4-Cylinder and V/6 Head Gaskets

Italian, German Reinz™, and copper-clad.

Starting at **\$19.50**



Red Line Oils and Additives

Simply the best! 5W40 and 15W50 stocked.

Starting at **\$9.95**



Fuel Pumps

Mechanical and Electric pumps for all Alfas.

Starting at **\$56.⁹⁵**



Carburetor Repair Kits

For Weber, Dellorto, or Solex Carburetors.

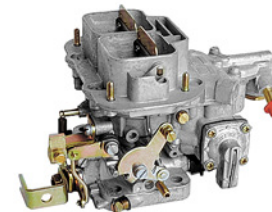
Starting at **\$49.⁵⁰**



Giulietta Air Boxes and Plenums

Beautiful new air boxes for Veloce and Normale.

Part No. **AF247 or AF249 - \$849.⁹⁵**



Weber DGV Carb for 750/101

Replaces the original Solex Downdraft carb.

Part No. **WC816 - \$395.⁰⁰**



Weber DCOE Carburetor Mounts

Rubber or billet Aluminum. For 40 or 45 DCOE.

Starting at **\$25.⁵⁰**



Carb Bellcrank and Supports

Custom manufactured by Centerline.

Starting at **\$94.⁵⁰**



Spica Fuel Injection Parts

Belts, thermostatic actuators, hoses, filters.

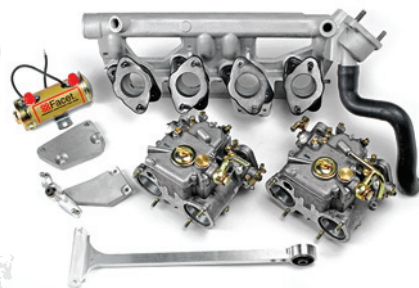
Starting at **\$11.²⁵**



Bosch Fuel Injection Parts

Intake hoses, injectors, relays, and O2 sensors.

Starting at **\$18.⁹⁵**



Weber Carb Conversion

Are there Webers in your Alfa's future?

If you've decided to convert your 1750 or 2000 to carbs, do it the right way - with the original factory setup! We pair a restored European intake manifold with new Geniune Weber 40 DCOEs, correctly jetted and ready for installation. Air filters are not included.

Part No. **WC500 - \$2,150.⁰⁰**



Reproduction Gas Tanks

New tanks for Spider, GTV, and TI/Super.

Part No. **GT201 - \$379.⁰⁰** Part No. **GT202 - \$289.⁰⁰**



Bayonette Gas Cap

High quality reproduction, properly vented.

Part No. **FL335- \$48.³⁵**



Curved DCOE Velocity Stacks

Long, upturned horns for increased torque.

Part No. **AF320** - \$349.⁹⁵



Fuel Filter/Regulator Assembly

Original style regulator for carbs, with filter.

Part No. **FP458** - \$395.⁰⁰



Tune-Up Parts

Caps, rotors, points, and condensers.

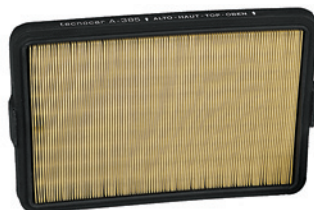
Starting at \$4.⁷⁵



Ignition Wire Sets

Black OEM-style or red silicone wire sets.

Starting at \$29.⁵⁰



Standard Air Filters

Replace regularly to ensure long engine life.

Starting at \$19.⁵⁰



Reusable Foam Air Filters

High-flowing foam air filters - wash and reuse.

Starting at \$24.⁸⁰



Electronic Modules for Marelli

Never replace your points again, easy install.

Part No. **ID447 or ID449** - \$89.⁵⁵



Green Cavis Wire Sets

Original for 750/101 and 105 series Alfas.

Part No. **IW401 or IW405** - \$66.⁹⁵



Oil Filters

Top quality filters from the US and Europe.

Starting at \$6.⁹⁵



Fuel Filters

For all carbureted and fuel injected Alfas.

Starting at \$6.⁹⁵



Centerline Electronic Distributor

- 20% - 50% Hotter Spark
- More Aggressive Advance Curve
- Maintenance Free and Simple to Install
- Completely Stock Appearance

Our magnetically switched electronic distributors are maintenance-free and very reliable. This means more time spent driving your Alfa and less time working on it.

Part No. **ID405** - \$296.⁰⁰



Water Pumps

High quality Italian-made pumps for all Alfas.

Starting at **\$67.⁵⁰**



Radiators and Coolant Hoses

Made to original specifications.

Starting at **\$9.⁹⁵**



Clutch Parts and Assemblies

Premium quality German & Italian parts.

Starting at **\$68.⁹⁵**



Transmission Parts

Syncronizers, sleeves, bearings, and bushings.

Starting at **\$21.⁹⁵**



Coolant Reservoirs

For Spider/GTV, GTV/6, Milano, and 164.

Starting at **\$71.⁵⁰**



Fan Blades and Shrouds

Original fans can crack and disintegrate at speed.

Starting at **\$42.⁵⁰**



Clutch Hydraulic Cylinders

Cylinders for all 4-cylinder and V/6 Alfas.

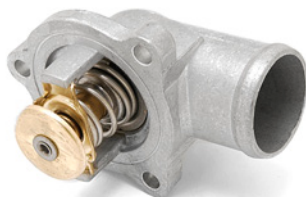
Starting at **\$33.⁵⁰**



Transmission Mounts

Original specification rubber trans mounts.

Starting at **\$15.⁹⁵**



Thermostats and Radiator Caps

Replace before overheating becomes an issue.

Starting at **\$8.⁹⁵**



Electric Fan Conversion

Increase power and cooling. Includes controller.

Part No. **FT645** - **\$189.⁰⁰**



Throw Out Bearing Adaptor

Use a 1750/2000 engine and clutch in early cars.

Part No. **CP501** - **\$169.⁶⁰**



Red Line Gear & Differential Oils

Provides smoother shifting and decreased wear.

Part No. **SS118** or **SS120** - **\$15.⁹⁵**

COOLING SYSTEM

CLUTCH & GEARBOX



Driveshaft Flex Discs

Replace flex discs at first sign of cracking.

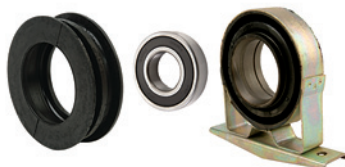
Starting at **\$31.00**



Universal Joints

Italian-made U-joints that fit perfectly!

Part No. **UJ150** - \$32.50 Part No. **UJ151** - \$21.95



Driveshaft Center Supports

Rubber driveshaft supports and bearings.

Starting at **\$28.95**



New Driveshaft Halves

For GTV/Spider, complete with yoke and U-joints.

Starting at **\$429.50**



Driveshaft Rebuild Kits

All the necessary parts, sold at a 10% discount.

Starting at **\$91.49**



Bearings and Seals

Wheel bearings, clutch bearings, and oil seals.

Starting at **\$13.65**

KONI

Enjoy a summer road trip with KONI. Open road or on track, KONI is the world leader in performance shock absorber and suspension technology for your classic vehicle.

CLASSIC SPECIAL

www.KONI-NA.com

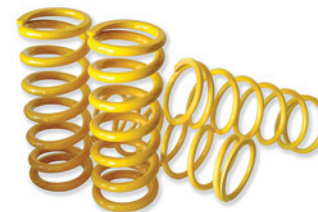
ITT
Engineered for life



Front Suspension Rebuild Kits

Everything you need to do it right, at 10% off.

Part No. **BJ125** - \$564.93 Part No. **BJ127** - \$303.98



Centerline Performance Springs

Lowers car 1", improves handling and braking.

Starting at **\$112.50**



Alfetta, GTV/6 & Milano Springs

Performance torsion bars and rear springs.

Starting at **\$216.00**



Polyurethane Rear Rebuild Kits

Firms up suspension, sold at a 10% discount.

Part No. **BJ128** - \$379.12 Part No. **BJ129** - \$232.38



Shock Absorbers

High quality shocks from Koni and KYB.

Starting at **\$66.⁵⁰**



Adjustable Upper Control Arms

Essential for a precise alignment. With ball joint.

Part No. **BJ131 or BJ141** - **\$113.⁵⁰**



Steering Idler Boxes and Parts

Rebuild kits and rebuilt idler box with bearings.

Starting at **\$36.⁴⁵**



Front Suspension Joints

Ball joints, tie rod ends, and castor joints.

Starting at **\$15.⁹⁵**



Front /Rear Suspension Bushings

Available in Polyurethane or rubber for all Alfas.

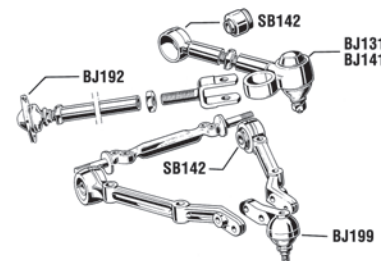
Starting at **\$5.⁹⁵**



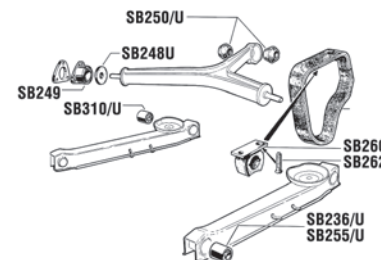
Power Steering Racks

Available for Milano and 164. Rebuilt in USA.

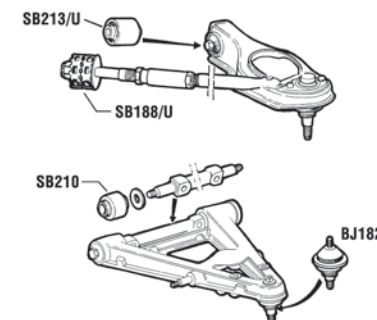
Starting at **\$376.⁰⁰**



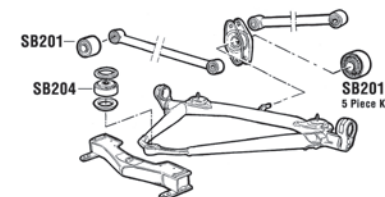
105/115 Front Suspension



105/115 Rear Suspension



116/119 Front Suspension



116/119 Rear Suspension



1972 GTV works its suspension hard while exiting a turn on track



Italian-Made Brake Rotors

Standard or cross-drilled and slotted.

Starting at **\$32.⁵⁰**



Carbon Metallic Brake Pads

Fierce stopping power with nice street manners.

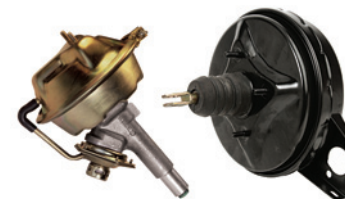
Starting at **\$42.²⁵**



Hydraulic Cylinders

Top quality cylinders from Italy and Germany.

Starting at **\$64.⁶⁵**



Brake Boosters

Restore proper braking with new boosters.

Part No. **BB170** - \$398.⁰⁰ Part No. **BB416** - \$429.⁰⁰



Rebuilt Brake Calipers

Exchange your calipers for freshly rebuilt units.

Starting at **\$98.⁰⁰**



Brake Rebuild Packages

Standard or High Performance, 10% discount.

Starting at **\$266.⁷⁰**



Replacement Reservoirs

Stop leaks, high quality reproduction reservoirs.

Part No. **BC335** - \$98.³⁵ Part No. **BC355** - \$139.⁵⁰



Brake Lines

In standard rubber or braided stainless steel.

Starting at **\$12.⁰⁰**



Big Brake Conversions

Ultimate braking - Spider/GTV or GTV/6/Milano.

Part No. **BK803** - \$3380.⁰⁰ Part No. **BK805** - \$3150.⁰⁰



Emergency Brake Parts

All the parts to ensure your e-brake works.

Starting at **\$11.⁶⁵**



750/101 Disc Brake Conversion

Replaces front drums for modern stopping.

Part No. **BK801** - \$895.⁰⁰



Rebuilt Starters and Alternators

Expertly rebuilt, sold on an exchange basis.

Starting at **\$238.00**



Head Lights and Bulbs

7" and 5.75" H4 lights and bulbs from Hella.

Starting at **\$64.65**



Ignition Switches

New switches with keys by OEM suppliers.

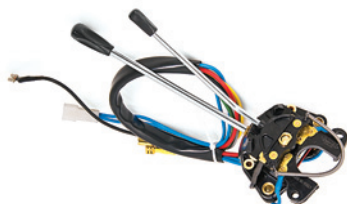
Starting at **\$78.50**



Horns

Original-style horn sets or ultra loud air horns.

Starting at **\$28.00**



Column Switches

Nice reproductions of turn/headlight switches.

Starting at **\$289.00**



Fuse Boxes and Parts

Reproduction complete fuse boxes and lids.

Part No. **FT655** - \$159.00 Part No. **FT657** - \$139.00



Front Grillwork

Reproduction grills, eyebrows, and mesh.

Starting at **\$298.00**



Outside and Inside Mirrors

Nice reproduction rear and side view mirrors.

Starting at **\$32.50**



Alfa and Pininfarina Emblems

Available in plastic and Cloisonné enamel.

Starting at **\$20.95**



Inner and Outer Door Handles

Available for Giulietta, GTV, Spider, Milano, 164.

Starting at **\$119.50**



GTA Replica Parts

Grills and mesh, door handles, license light bar.

Starting at **\$129.00**



Spider Headlight Covers

A classic fitment on Spiders 1966-82.

Part No. **LF520** - \$274.⁰⁰



Tail Light and Turn Lenses

Reproduction lenses and complete housings.

Starting at **\$23.⁵⁰**

FREE
SHIPPING ON
ALL WHEELS*
*Continental USA ONLY



GTA Replica Wheels - 15" x 7"

Updated 15" GTA wheels by Alfaholics. 2 offsets.

Part No. **WHGTA2** - \$319.⁰⁰ Part No. **WHGTA3** - \$319.⁰⁰



Mini-Lite Replica - 15" x 7"

Light and affordable. Silver with polished lips.

Part No. **WHMINS** - \$187.²⁵



Weather Stripping

Windshield, door, and trunk seals for all models.

Starting at **\$13.⁵⁰**



Rubber Boots and Grommets

Shift and fuel boot and firewall grommets.

Starting at **\$6.²⁰**



Mini-Lite Replica - 15" x 7"

Light and affordable. Gunmetal with polished lips.

Part No. **WHMING** - \$187.²⁵



Cromodora Daytona - 14" x 6"

Great looking 14" period aftermarket wheel.

Part No. **WHCROM** - \$265.⁰⁰



Giulietta & 101 Giulia Hub Caps

Available in chrome or polished stainless steel.

Part No. **HC900** - \$41.⁵⁰ Part No. **HC900C** - \$69.⁰⁰



Wheel Center Caps

Center caps for all original Alfa wheels.

Starting at **\$9.⁹⁵**



Ronan A-1 Replica - 15" x 7"

A modern classic for the GTV/6 and Milano.

Part No. **WHRON1** - \$292.⁰⁰



147 Sport Wheels - 15" x 6.5"

Alfa original equipment wheel by Speedline.

Part No. **WH147SPORT** - \$172.²⁵



Dashboards and Veneer Kits

Beautifully remade dashboards and veneers.

Starting at **\$125.00**



Door Panels

For Giulietta/101 Giulia, GTV, and Spider.

Starting at **\$239.00**



Alfa Logo Floor Mat Sets

Tough floor mats protect carpet - made in Italy.

Starting at **\$119.00**



Original Headliner Kits

For Sprint, TI/Super, and GTV. Correct materials.

Starting at **\$179.00**



Seat Upholstery Sets

The finest original materials - made in Italy.

Starting at **\$409.00**



Replacement Seat Foam

Make re-upholstered seats look and feel great.

Starting at **\$106.50**



Radio Block-Off Plates

For Giulietta/101 Giulia Spider, GTV, and Duetto.

Starting at **\$94.50**



Leather Shift and Brake Boots

US-made from durable, high quality leather.

Starting at **\$28.00**



Carpet Sets

Italian and US-made carpet sets for all Alfas.

Starting at **\$159.00**



Rubber Floor Mat Sets

For Giulietta/101 Giulia and Duetto/1750 Spider.

Part No. **FM180** - \$625.00 Part No. **FM195** - \$935.00



Shift Knobs

A nice compliment to any interior. 8+ styles.

Starting at **\$15.95**



GTA "Hellebore" Steering Wheel

Reproduction - 385 mm with attached hub.

Part No. **SW137** - \$849.00



Nardi Classico Mahogany

Genuine Nardi, made in Italy. 360 or 390 mm.

Part No. **SW130** - \$332.⁰⁰ Part No. **SW131** - \$336.⁰⁰



Nardi Classico Leather

Black leather with brushed spokes. 360 mm.

Part No. **SW133** - \$298.⁰⁰



Nardi Sportivo Leather

Deep dish, perforated grip, red stitching. 360 mm.

Part No. **SW135** - \$276.⁰⁰



Volante Leather

Nice performance wheel. Black Leather. 350 mm.

Part No. **SW123** - \$144.⁰⁰



Forza Mahogany

Mahogany with polished spokes. 350 mm.

Part No. **SW112** - \$183.⁰⁰



Corsa Mahogany

Mahogany with brushed spokes. 350 mm.

Part No. **SW114** - \$166.⁰⁰



2000 Conversion Headers

To fit a 1750/2000 engine into a 750/101 car.

Part No. **PH101** - \$398.⁰⁰ Part No. **PH101C** - \$489.⁰⁰



GTA Reproduction Headers

Original GTA design. Complete system available.

Part No. **PH105** - \$459.⁰⁰



Twinspark Headers

To fit a Twinspark engine into your 115 Alfa.

Part No. **PH125** - \$795.⁰⁰



Original Veloce Headers

For Giulietta and 101 Giulia - 1300 or 1600.

Part No. **PH103** - \$515.⁰⁰



2000 Performance Headers

Chrome or ceramic coated. With or without Cat.

Starting at \$356.⁰⁰



V6 Performance Headers

Fits GTV/6 and Milano. With or Without Cats.

Part No. **PH120** - \$1,098.⁰⁰ Part No. **PH120C** - \$1,398.⁰⁰



Stainless Performance Exhaust
2.25" Diameter - for GTV/Spider 1971 to 1974.
Part No. **PH201** - \$625.⁰⁰



V6 Performance Downpipes
For GTV/6 and Milano, includes cat, + 8 HP!
Part No. **OE561** - \$595.⁰⁰



"Stinger" Tail Pipes
For GTV/Spider - light weight, nice sporty tone.
Part No. **OE507 or OE591** - \$63.⁰⁰



Twin Tip Tail Pipes
By CSC Marmite - for GTV/6, Milano, and 164.
Part No. **PH301, PH303, PH305** - \$349.⁰⁰

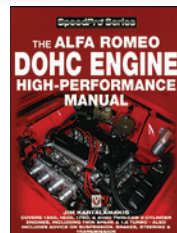


Original Replacement Exhausts

- Made in Italy to OEM Specifications
- Thick Aluminized Steel for Long Life
- Exact Replacement with Original Look
- Front - Center - Rear Sections

When it's time to replace the exhaust on your Alfa check out our complete line of Italian-made, high quality original replacement exhausts. We stock all pieces from engine to tail pipe for most Alfas.

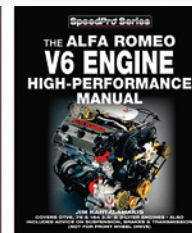
Starting at **\$76.⁰⁰**



Performance Tuning Books

For 4-cylinder and V6 by Jim Kartalamakis.

Part No. **RM127** - \$39.⁹⁵ Part No. **RM123** - \$59.⁹⁵



Repair Manuals

Aftermarket and original factory shop manuals.

Starting at **\$76.⁰⁰**



Alfa Romeo 100 Years

Beautiful hardcover Centenario book.

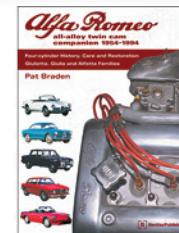
Part No. **RM140** - \$89.⁹⁵



General Alfa Romeo Books

For Giulietta and 101 Giulia - 1300 or 1600.

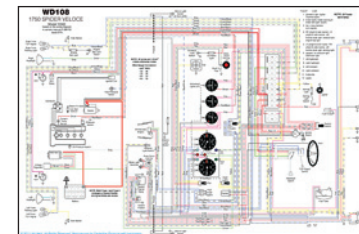
Part No. **RM126** - \$39.⁹⁵ Part No. **RM131** - \$39.⁹⁵



Factory Parts Manuals

Parts manuals with exploded assembly views.

Starting at **\$76.⁰⁰**



Full Color Wiring Diagrams

11" x 17" size, laminated. Giulietta - 115 series.

Starting at **\$9.⁹⁵**

Alfa Romeo Model Identification Chart

Alfa model designations can be somewhat confusing, particularly with the GT, GTV and Sprint names used on various models from the Giulietta Sprints of the mid-1950's through to the GTV/6 of 1986. Generally **GT**, **GTV**, and **Sprint** refer to coupes, **Spider** to convertibles, and **Berlina**, **Super**, and **TI** to sedans.

Throughout our catalog and web site you will see groups of vehicles identified by their **Tipo** - the numerical series of the vehicle - for example "**105 Giulia**" or "**105 Series**".

750 SERIES GIULIETTA, 1300cc 1955-59

engine no.	model
1315.00.001 to 09.002	750B Sprint
1315.50.001 to 74.950	750C Berlina
1315.40.001 to 45.854	750D Spider
1315.30.001 to 33.000	750E Sprint Vel.
1315.30.001 to 33.000	750F Spider Vel.

101 SERIES GIULIETTA, 1300cc 1959-64

tipo no.	model
101.00	Berlina
101.02	Sprint
101.03	Spider
101.04	Spider (USA)
101.05	Sprint (USA)
101.06	Sprint Veloce
101.07	Spider Veloce
101.11	Berlina TI
101.13	Berlina TI (USA)
101.17	Sprint Speciale (USA)
101.20	Sprint Speciale
101.22	Station Wagon
101.24	Sprint Veloce (USA)
101.25	Spider Veloce (USA)
101.26	Sprint Zagato (SZ)

101 SERIES GIULIA, 1600cc 1962-65

101.12	Sprint
101.18	Spider Veloce
101.21	Sprint Speciale
101.23	Spider
101.23.374639 to 4935	Gran Sport 4R

102 SERIES 2000cc 1958-62

tipo no.	model
102.00	Berlina
102.04	Spider
102.05	Sprint

106 SERIES 2600cc 1962-67

106.00	Berlina
106.01	Spider
106.02	Sprint
106.12	Sprint Zagato

105 SERIES GIULIA 1300cc 1965-72

105.30	GT Junior
105.39	1300 TI
105.59	GTA Junior
105.91	Spider Junior
105.93	Junior Zagato

105 SERIES GIULIA 1600cc 1965-72

105.02	Giulia Sprint GT
105.03	Spider 1600 (Duetto)
105.08	Giulia TI
105.08	(Also Giulia TI) Gran Sport 4R
105.11.75001 to 113	Tubolare Zagato
105.11.750114 to 125	TZ-2
105.16	TI Super
105.25	GTC Convertible
105.26	Giulia Super
105.32	GTA
105.36	GT Veloce

105 SERIES 1750cc 1969-71

tipo no.	model
105.48	Berlina (Euro)
105.44	GTV (Euro)
105.57	Spider (Euro)
105.71	Berlina (USA)
105.51	GTV (USA)
105.62	Spider (USA)

105/115 SERIES 2000cc 1972 ON

105.12	Berlina (Euro)
105.21	GTV (Euro)
105.24	Spider (Euro)
105.64	Montreal 2.6 Liter V-8
115.00	Berlina (USA)
115.01	GTV (USA)
115.02	Spider Veloce (USA)
115.41	Spider Veloce '75 on (USA)
115.24	Junior Zagato 1600

116 SERIES ALFETTA 2000cc 1975-79

116.15	California GT, GTV, Sprint Vel.
116.29	49 State GTV
116.33	49 State Sedan
116.34	California Sedan
116.58	Sport Sedan

GTV/6, MILANO (75) 1981-89

119.69	GTV/6 2.5 Liter
161.14	Milano Silver
161.16	Milano Gold
161.24	Milano Verde 3.0 Liter
161.36	Milano Platinum

164 SERIES 1991-95

164.33	164 (Base) and 164L
164.43	164 California
164.33E	164S
168.253	164LS
164.953	164 Quadrifoglio



About The Alfa Romeo Logo

In 1910, Annonima Lombarda Fabbrica Automobili (A.L.F.A.) was founded. The company's badge was derived from the coat of arms of the city of Milano, Italy.

The red cross on the the white background depicts the heroic deeds of Milanese Giovanni da Rho during the First Crusades of the 11th century. He was the first to place a cross on the walls of the city of Jerusalem. The right half of the emblem, with the famous serpent devouring a man, is the crest of Ottone Visconti, founder of the noble Visconti family of Milano. He took the image from the shield of a vanquished enemy during the First Crusade. It is a symbol of power and success - of the enemies of the city of Milano being devoured by the snake.

In 1915, industrialist Nicola Romeo took over management of A.L.F.A. and his name was added to the logo. The laurel wreath (not used currently) was added in 1925 when Alfa won their first racing World Championship. The word "MILANO" was dropped from the bottom of the logo in 1972 when a new factory (*Alfa Sud*, or Alfa South) opened in the South of Italy near Napoli.

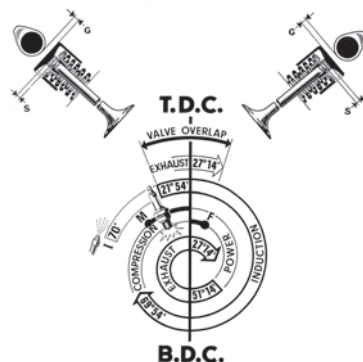
Camshaft Terms and Timing

Valve Duration is the length of time the valves are held open, measured in degrees of crankshaft rotation. **Valve Lift** is the amount that the valves are opened, usually expressed in millimeters. Increased duration will yield greater power at higher RPMs with a reduction in low speed torque. Greater valve lift, without increasing duration, will yield more power without much change in the nature of the power curve. Centerline's performance cams are a high-lift, moderate-duration cam to retain midrange power.

Overlap refers to the time that both the intake and exhaust valves are opened at the same time. A little overlap maintains good low RPM performance while increasing mid and high RPM performance. Lots of overlap tends to move the power higher in the RPM band.

Camshaft Lobe Center refers to the position of the crankshaft when the camshaft lobes for the number one cylinder are at their max opening, expressed in degrees. Most 4-cylinder Alfas do best with 102° lobe centers.

However, the vernier adjustment on the camshaft sprocket allows you to easily adjust cam timing to suit your individual driving style. You can retard the lobe centers to about 110° for better low end or advance them to about 98° for better high RPM power. Changing lobe centers on the intake camshaft is often enough to achieve the desired results.



Cam Timing Example

1972-74 Spider, GTV, Berlina 2000 (USA)

Cam Timing Specs: 22-70-51-27

Intake Valve Opens	22° BTDC
Intake Valve Closes	70° ABDC
Exhaust Valve Opens	51° BBDC
Exhaust Valve Closes	27° ATDC

TDC = Top Dead Center
BDC = Bottom Dead Center



Ignition Timing and Tune-Up Specifications

Timing marks on front pulley are as follows: **P** = "Punto", or Top Dead Center. **F** = "Fissa", or fixed timing mark, which may be before or after TDC. **M** = "Massimo" or max timing advance. **I** = "Iniezione", the timing mark for the Spica fuel injection.

Timing "F"	Max. Advance "M"	Timing "F"	Max. Advance "M"
1300 Giulietta Sprint, Spider, Berlina 5° BTDC	40°/46° @ 5,000 RPM	2000 Alfetta 1976 - California with Cat. TDC	33°/39° @ 5,000 RPM
1300 Giulietta Sprint/Spider Veloce, SS, SZ 5° BTDC	43°/49° @ 5,000 RPM	2000 Alfetta and Spider 1977-79 - with Cat. 4°/6° BTDC	30°/36° @ 5,000 RPM
1300 Giulia Super (105 Series) 2°/4° BTDC	36°/40° @ 4,600 RPM	2000 Spider 1980-81 - Marelli Plex 5°/7° BTDC	38°/42° @ 4,500 RPM
1300 GTA Jr. 4°/6° BTDC	27°/31° @ 5,000 RPM	2000 Spider 1982+ (Not Adjustable) 11° BTDC	26°/34° @ 2,400 RPM
1600 Giulia Spider Veloce, SS, TZ 4°/6° BTDC	43°/49° @ 5,000 RPM	GTV/6 1981-83 4°/6° BTDC @ 950 RPM	26°/29° @ 5,000 RPM
1600 Giulia Super 2°/4° BTDC	40°/43° @ 5,000 RPM	GTV/6 1984-86 and Milano 2.5 1987-89 2° BTDC @ 900 RPM	
1600 Giulia Sprint, Spider, TI 1°/5° BTDC	40°/47° @ 5,000 RPM	Milano 3.0 1987-89 7° BTDC @ 900 RPM	
1600 Duetto, GTV, GTC 2°/4° BTDC	40°/43° @ 5,000 RPM	Engine Firing Order:	
1600 GTA 4°/6° BTDC	27°/31° @ 5,000 RPM	4-cylinder engines	1-3-4-2
1750 Spider, GTV, Berlina - Spica USA 1°/3° ATDC	31°/37° @ 5,000 RPM	V6 engines	1-4-2-5-3-6
1750/2000 Spider, GTV, Berlina - Euro 2°/4° BTDC	37°/40° @ 4,600 RPM	Distributor Specifications:	
2000 Spider, GTV, Berlina - Spica 1971-75 5°/7° ATDC	27°/33° @ 5,000 RPM		
2000 Alfetta 1975-79 - Spica, 49-State 5°/7° ATDC	27°/33° @ 5,000 RPM		

Gap Dwell

Lucas DM-2	.014"-.016"	60°
Marelli (All 4-cyl)	.017"-.019"	60°
Bosch (All 4-cyl)	.014"-.016"	65°
Marelli (Plex) Pulser Air Gap	.010"-.016"	

Alignment Specifications

A careful alignment from an experienced shop can have a shocking effect on how well your Alfa handles. The chart below lists stock factory tire sizes and alignment specifications, along with our own performance-optimized recommendations for alignment when running larger wheels and tires which are listed in blue. These settings work very well with our performance suspension and feature increased camber to help with front end grip and turn-in, as well as increased caster which decreases the tendency to follow ridges in the road which can be an issue with wide tires.

Adjustable upper control arms are necessary to properly align a 105/115 chassis car!

For proper steering angles on the 750/101 and 105/115 chassis, you must adjust the tie rods and center track rod, measured between the centers of the tie-rod ends, to the following lengths before aligning the front suspension:

750/101 Tie rod length: 265 - 285 mm. **750/101 Center track rod:** 470 - 490 mm.
105/115 Tie rod length: 265 - 280 mm. **105/115 Center track rod:** 530 - 550 mm.

For all 164 models, we have listed the updated 1994-95 LS specifications. If rear tire wear is an issue on your 164 you may wish to modify the rear toe setting to "0" toe.

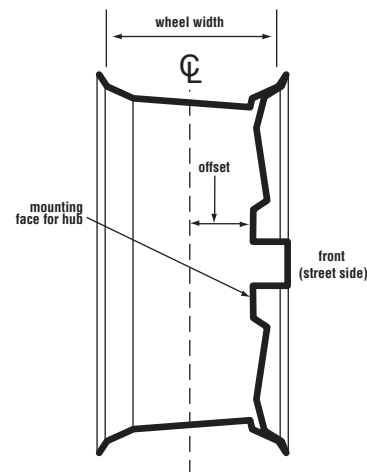
Model	Tire Size	Toe-in	Camber	Caster
Giulietta/101 Giulia	155/78-15	1/8"	0°	1° to 1.5°
Giulietta/101 Giulia	185/65-15	1/16"	-1/4°	1° to 1.5°
105 Giulia	165/65-15	-3 mm	-1/10° to -1/2°	1° to 2°
105/115 Series	185/70-14	-3 mm	-1/2°	2°
105/115 Series	195/60-15	-3 mm	-1/2°	1° - 1.5°
105/115 Series	205/60-14	1/8"	-1/2°	2° to 3°
105/115 Series	205/55-15	1/8"	-1/2°	2° to 3°
Alfetta (all)	185/70-14	-3 mm	-1/2°	4.5°
Alfetta (all)	205/60-14 or larger	1/16"	-1° to -1.3°	5.3°
GTV/6	195/60-15	1/16"	-1/2°	4.5°
GTV/6	205/55-15 or larger	1/16"	-1° to -1.3°	5.3°
Milano	195/60-14	1/16"	-1/2°	4.5°
Milano	195/55-15	1/16"	-1/2°	4.5°
Milano	205/50-15 or larger	1/16"	-1° to -1.3°	5.3°
164 (front)	195/65-15	0	-1.1° to -2.4°	1° to 2.5°
164 (rear)	195/65-15	+ 4/6 mm	+0.1° to -1.8°	

Wheel and Tire Sizing

Wheel Offset

Wheel offset describes the distance that the hub mounting face of a wheel is offset from the wheel's centerline. A positive offset is when the mounting face is outside of the wheel centerline. Negative offset is the opposite, with the mounting face inside of the wheel centerline.

Example of a positive offset wheel:



Determining the proper offset and tire size becomes critical when fitting wider than stock wheels to a car. For example, a 15" x 7" wheel with a 35 mm offset will fit (barely) in the rear of a Step-Nose GTV, while the same size wheel with a 30 mm offset will rub on the fenders.

Tire Size Markings

Example: 205/55-15

- 205** The approximate cross section width of the tire in millimeters.
- 55** The ratio between the height of the tire and the cross section width. The sidewall of this tire is 55% as high as it is wide. A smaller aspect ratio provides a stiffer sidewall with more sporting handling and a bit harsher ride.
- 15** The outside diameter of the wheel in inches.

Calculating Overall Tire Diameter

Maintaining the proper overall tire diameter is important when changing tire sizes.

The formula for overall diameter is:

$$\frac{(\text{Width} \times \text{Aspect Ratio}) \times 2}{25.4} + \text{Wheel Diameter} = \text{Overall Tire Diameter}$$

Let's calculate the original tire size on a Giulietta:

- 155** Approximate cross section (mm)
- 78** Aspect ratio converted to "0.78"
- 15** Wheel Diameter (inches)

$$\frac{(155 \times 0.78) \times 2}{25.4} + 15 = 24.52"$$

We'd like to use a **185/65-15** tire instead:

$$\frac{(185 \times 0.65) \times 2}{25.4} + 15 = 24.47"$$

The overall diameter is very close, so while the contact patch will be wider gearing and speedometer accuracy will be unchanged.

Torque Specification Chart

All Figures in Ft.Lbs

Engine	1300 750/101 Series	1300 105 Series	1600 All	1750 All	2000 105/115 Series	2000 Alfetta Series	GTV/6 Milano	164 All
Cylinder Head Nuts (W/Oil)	45	50	50	60	65	65	75	75
Cam Bearing Cap Nuts (W/Oil)	14	16	16	16	16	16	16	16
Scam Cover Nuts (W/Oil)	12	12	12	12	12	12	12	12
Scam Cover Nuts (W/Oil)	25	25	25	25	25	25	25	25
Main Plugs	25	25	25	25	25	25	25	25
Main Bearing Cap Nuts (W/Oil)	25	25	25	25	25	25	25	25
Rod Bearing Cap Nuts	26*	26*	26*	26*	26*	26*	26*	26*
Crank Pulley Nut (W/Oil)	29	29	29	29	29	29	29	29
Flywheel Bolts (W/Oil)	33	33	33	33	33	33	33	33
Clutch Plate Bolts (Dry)	18	18	18	18	18	18	18	18
Injector on Manifold (Dry)	18	18	18	18	18	18	18	18
* Use Loctite Red (W/Oil)	18	18	18	18	18	18	18	18

Gearbox (Split Case Style)

Front Bell Housing Nuts	32	32	32	32	32	32	32	32
Gearbox Casing	13	13	13	13	13	13	13	13
Rear Cover Nuts	15	15	15	15	15	15	15	15
Layshaft Nuts	60	60	60	60	60	60	60	60
Main Shaft Yoke Nut	87 (101)	87	87	87	87	87	87	87
Input Shaft Nut	87 (101)	87	87	87	87	87	87	87
Main Shaft Yoke to Flex Disc	42	42	42	42	42	42	42	42

Differential

Crown Gear Bolts (W/Oil)	36	36	36	36	36	36	36	36
Pinion Nut	80	80	80	80	80	80	80	80
Axle Tube to Differential Carrier	17	17	17	17	17	17	17	17
Pinion Flange to Drive Shaft Flange	29	29	29	29	29	29	29	29

Wheel Lug Nuts

	60	60	65	65	65	65	65	75
--	----	----	----	----	----	----	----	----

Gearbox Alfetta, GTV/6, Milano

Ring Gear Bolts (W/Oil)	54	54	54	54	54	54	54	54
Differential Side Cover Nuts	14	14	14	14	14	14	14	14
Bearing Plate to Intermediate Flange	11	11	11	11	11	11	11	11
Main Shaft Nut	75	75	75	75	75	75	75	75
Pinion Shaft Nut	90	90	90	90	90	90	90	90
Clutch-Gearbox Housing to Gearbox-Differential Housing	17	17	17	17	17	17	17	17
Differential Output-Shaft Cover	15	15	15	15	15	15	15	15
Shift Lever to Selector Shaft Nut	23	23	23	23	23	23	23	23

DISCOUNTS:

WE OFFER A 10% DISCOUNT ON ORDERS OVER \$500. This can make a substantial difference on big projects like an engine rebuild or front-end overhaul. *There are some exceptions: please see our web site for complete list.*

WHOLESALE:

Licensed repair shops and parts resellers are eligible for our wholesale pricing program. Inquire for details.

ORDERING:

Orders can be made by phone, fax, or through our Online Store. CALL **888-750-ALFA (2532)** between 8:30 am-5:30 pm Mountain Time or FAX 303-447-0259 anytime.

PAYMENT TERMS:

We accept **MASTERCARD, VISA, DISCOVER CARD, AMERICAN EXPRESS, PAY PAL**, money orders, or your check. We no longer accept C.O.D. or wire transfers.

WARRANTY:

All parts purchased from Centerline Products are warranted for 90 days from date of invoice for materials and workmanship, except as noted. Warranty doesn't cover parts used on racing cars or parts installed on non-Alfa vehicles. Centerline Products accepts no liability for damage caused by defective parts and offers no allowance for labor, incidental costs, or shipping. *Closely inspect all parts on receipt, prior to installation.*

RETURNS:

Before shipping any returns, call us to obtain authorization; we often will be able to solve a problem over the phone. Parts must be returned within 60 days of the invoice date, and be in new, uninstalled condition. Credit will not be issued for shipping on returned items. *Returns after 60 days will be at our discretion.* Electrical components, books and manuals, special order, and used parts will not be accepted for return. Individual components of a discounted "kit" may not be returned. Any shipment refused by the recipient will not be accepted as a return and no credit will be issued.

SHIPPING:

All orders are shipped with United Parcel Service or the US Mail. It is often easier to have your order shipped to your place of business. We ship orders all over the world on a daily basis. Contact us for a quote and we will check several shipping options to get you the lowest rate. *The recipient is responsible for all import taxes, duties, and brokerage fees.*

DISCLAIMER:

While it is one of the services of Centerline to publish and express technical information, the viewpoints and procedures expressed are ours and should be weighted against conventional, traditional and generally accepted techniques and modifications. The vehicle owner has ultimate responsibility for suitability or legality if using any information printed in our catalog or on our web site.

1220 Commerce Court
Lafayette, CO 80026



SCAN QR CODE OR VISIT US ON SOCIAL MEDIA



10% OFF
ALL ORDERS OVER \$500*

*some exceptions apply. See web site for details.